

HUNTER 2000



CONSERVATION OF LANDS
AND BUILDINGS OF NATURAL,
HISTORICAL, SCENIC OR
RECREATIONAL VALUE IN THE
HUNTER REGION

Objectives

To make conservation an integral part of planning in the Hunter Region.

To secure the dedication of adequate natural areas as Nature Reserves, National Parks and State Parks.

To ensure that historic buildings and urban areas of special quality are conserved.

To protect distinctive landscapes.

To ensure the provision of adequate open space in urban areas.

To ensure that aboriginal relics and archaeological sites are protected.

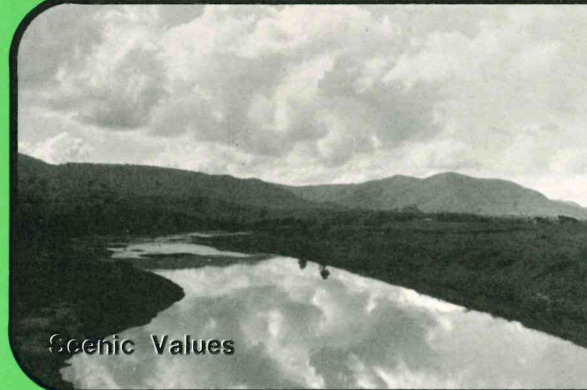
CONSERVATION SAVES FOR TOMORROW'S PEOPLE



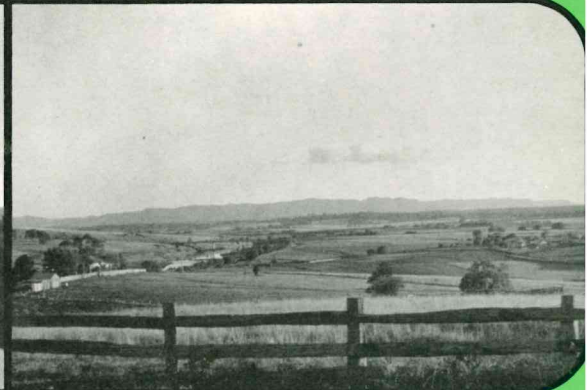
Natural Values



Historical Values



Scenic Values



Recreational Values



WHY

Population growth and environmental quality are pressing problems of to-day.

The region's magnificent scenery, historic values and unique natural areas must be conserved.

WHEN

Now — Tomorrow is too late

WHO

You.

HOW

Support the National Trust's proposals.

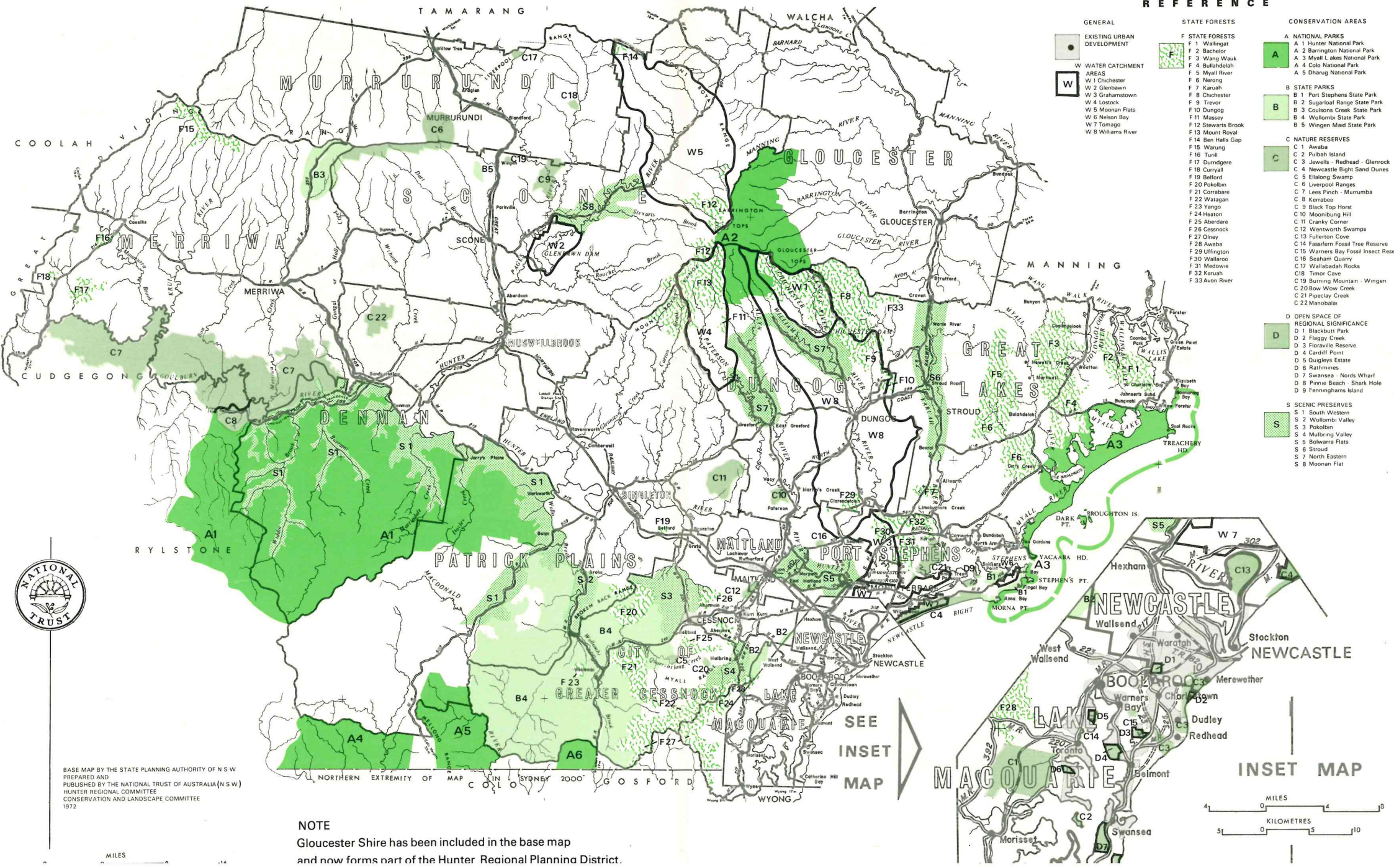
Obtain a copy of the full report- 'HUNTER 2000'

Alert your Council and local Members of Parliament to the problems and potential of your area.

Join The National Trust

Tell the Press, the Public and your friends, of the need for conservation.

HUNTER 2000



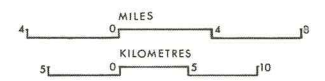
REFERENCE

- | | | |
|--|--|---|
| GENERAL | STATE FORESTS | CONSERVATION AREAS |
| <ul style="list-style-type: none"> EXISTING URBAN DEVELOPMENT WATER CATCHMENT AREAS | <ul style="list-style-type: none"> F STATE FORESTS | <ul style="list-style-type: none"> A NATIONAL PARKS B STATE PARKS C NATURE RESERVES D OPEN SPACE OF REGIONAL SIGNIFICANCE S SCENIC PRESERVES |
| <ul style="list-style-type: none"> W 1 Chichester W 2 Glenbawn W 3 Grahamstown W 4 Lockock W 5 Moonan Flats W 6 Nelson Bay W 7 Tomago W 8 Williams River | <ul style="list-style-type: none"> F 1 Wallingat F 2 Bachelor F 3 Wang Wauk F 4 Bullahdelah F 5 Myall River F 6 Nerong F 7 Karuah F 8 Chichester F 9 Trevor F 10 Dungog F 11 Massey F 12 Stewarts Brook F 13 Mount Royal F 14 Ben Halls Gap F 15 Warung F 16 Tunli F 17 Durrigere F 18 Curryall F 19 Belford F 20 Pokolbin F 21 Corraborah F 22 Watagan F 23 Yangoo F 24 Heaton F 25 Abercrombie F 26 Cessnock F 27 Olney F 28 Awaba F 29 Uffington F 30 Wallaroo F 31 Meadow F 32 Karuah F 33 Avon River | <ul style="list-style-type: none"> A 1 Hunter National Park A 2 Barrington National Park A 3 Myall Lakes National Park A 4 Colo National Park A 5 Dharug National Park B 1 Port Stephens State Park B 2 Sugarloaf Range State Park B 3 Coullsons Creek State Park B 4 Wollombi State Park B 5 Wingen Maud State Park C 1 Awaba C 2 Pulbah Island C 3 Jewells - Redhead - Glenrock C 4 Newcastle Bight Sand Dunes C 5 Etalong Swamp C 6 Liverpool Ranges C 7 Less Finch - Murrumba C 8 Kerabee C 9 Black Top Horst C 10 Moonbung Hill C 11 Cranky Corner C 12 Wentworth Swamps C 13 Fullerton Cove C 14 Fassfern Fossil Tree Reserve C 15 Warners Bay Fossil Insect Reserve C 16 Seaham Quarry C 17 Wallabadah Rocks C 18 Timor Cave C 19 Burning Mountain - Wingen C 20 Bow Wow Creek C 21 Pipeclay Creek C 22 Manobala D 1 Blackburn Park D 2 Flaggy Crik D 3 Floraville Reserve D 4 Cardiff Point D 5 Gungahs Estate D 6 Rathmines D 7 Swansea - Nords Wharf D 8 Pinnac Beach - Shark Hole D 9 Fenninghams Island S 1 South Western S 2 Wallombi Valley S 3 Pokolbin S 4 Mulbring Valley S 5 Bolwarra Flats S 6 Stroud S 7 North Eastern S 8 Moonan Flat |



BASE MAP BY THE STATE PLANNING AUTHORITY OF N.S.W.
 PREPARED AND PUBLISHED BY THE NATIONAL TRUST OF AUSTRALIA (N.S.W.)
 HUNTER REGIONAL COMMITTEE
 CONSERVATION AND LANDSCAPE COMMITTEE
 1972

NOTE
 Gloucester Shire has been included in the base map
 and now forms part of the Hunter Regional Planning District.



SEE INSET MAP

INSET MAP